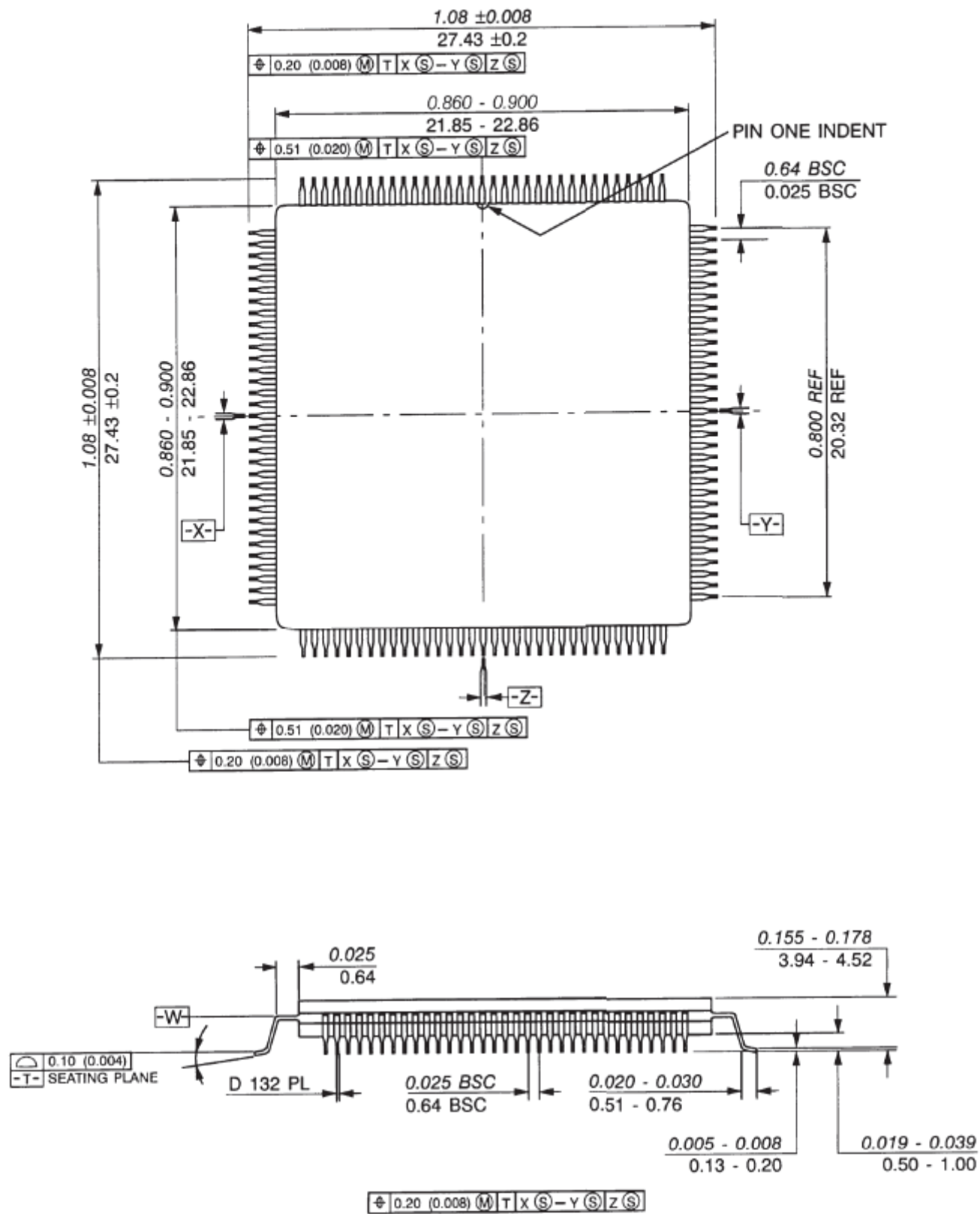


# Package Mechanical Data

132-lead CERQUAD



- Notes:
1. Dimensioning and tolerancing per ansi Y14.5M, 1982.
  2. Controlling dimensions: inch.
  3. Dim A and B define maximum ceramic body dimensions including glass protrusion and mismatch of ceramic body top and bottom.
  4. Datum plane - W - is located at the underside of leads where leads exit package body.
  5. Datums X-Y and Z to be determined where center leads exit package body at datum - W -.
  6. Dim S and V to be determined at seating plane, datum - T -.
  7. Dim A and B to be determined at datum plane - T -.