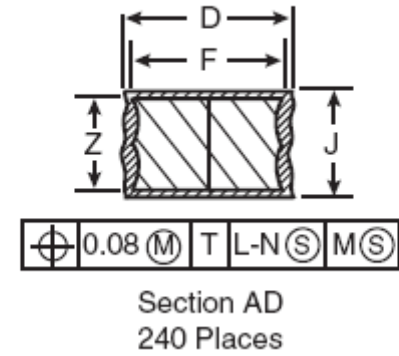
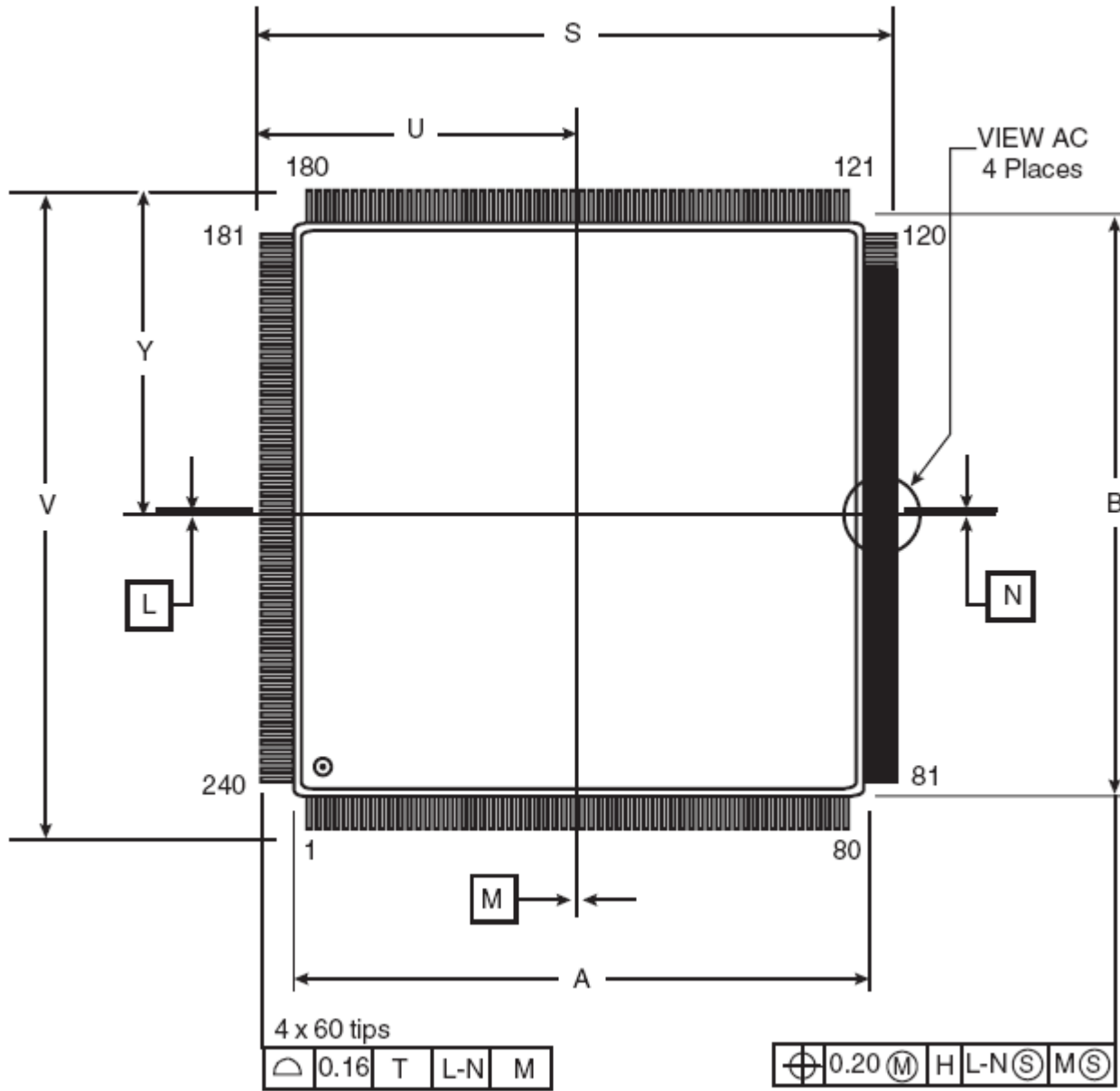
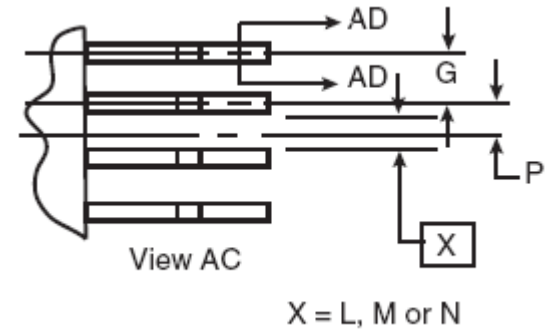
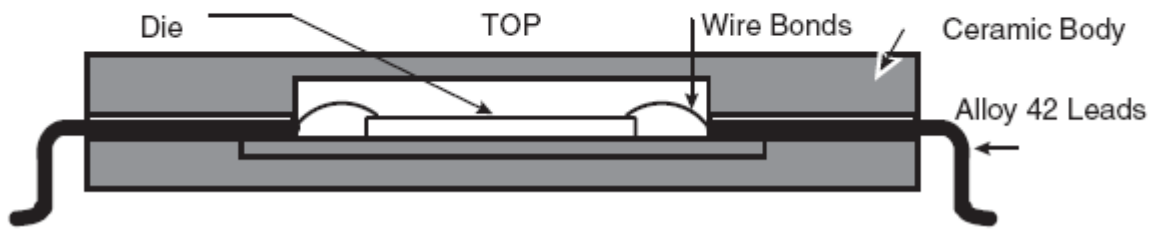


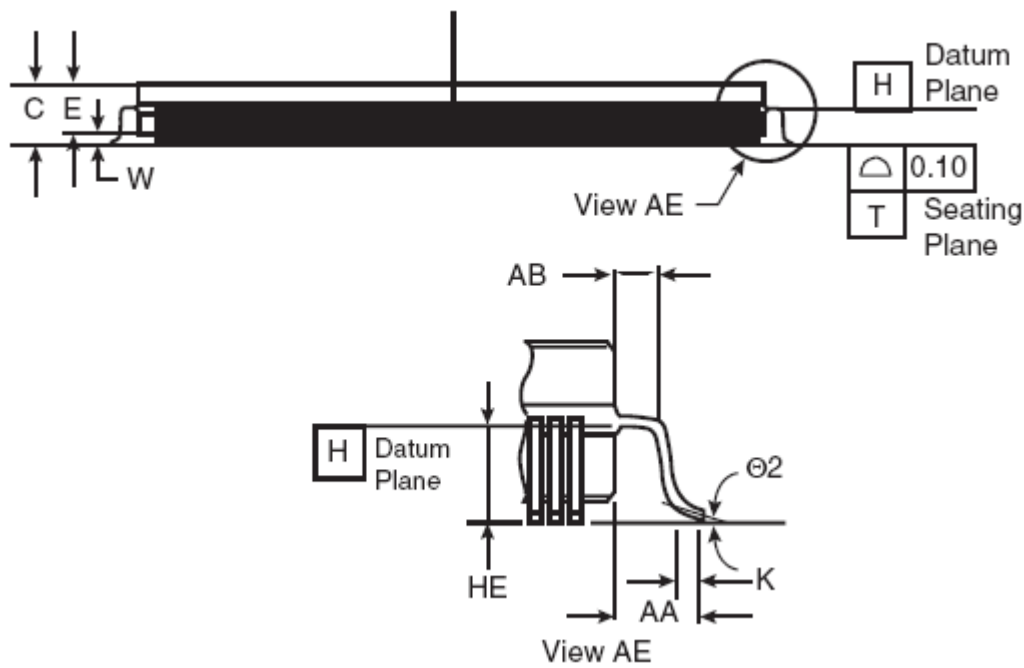
# CERQUAD 240 Package

Mechanical Dimensions of the Wire-bond CERQUAD Package



Notes:

1. Dimensioning and tolerancing per ASMEY14.5M-1994
2. Controlling dimension: millimeter
3. Datum plane H is located at bottom of lead and is coincident with the lead where the lead exists the ceramic body at the bottom of the parting line
4. Datum L, M and N to be determined at datum plane H
5. Dimension S and V to be determined at seating plane T.
6. Dimension A and B define maximum ceramic body dimensions including glass protrusion and top and bottom mismatch



MILLIMETERS			
DIM	MIN	TYP	MAX
A	30.86	31.00	31.75
B	30.86	31.00	31.75
C	3.67	3.95	4.15
D	0.185	0.220	0.270
E	3.10	3.50	3.90
F	0.175	0.200	0.225
G	0.50 BSC		
HE	2.025	2.100	2.175
J	0.130	0.147	0.175
K	0.45	0.50	0.55
P	0.25 BSC		
S	34.41	34.58	34.75
U	17.20	17.30	17.40
V	34.41	34.58	34.75
W	0.45	0.70	0.95
Y	17.20	17.30	17.40
Z	0.122	0.127	0.132
AA	1.80 REF		
AB	0.95 REF		
$\theta 2$	1°	4°	7°